



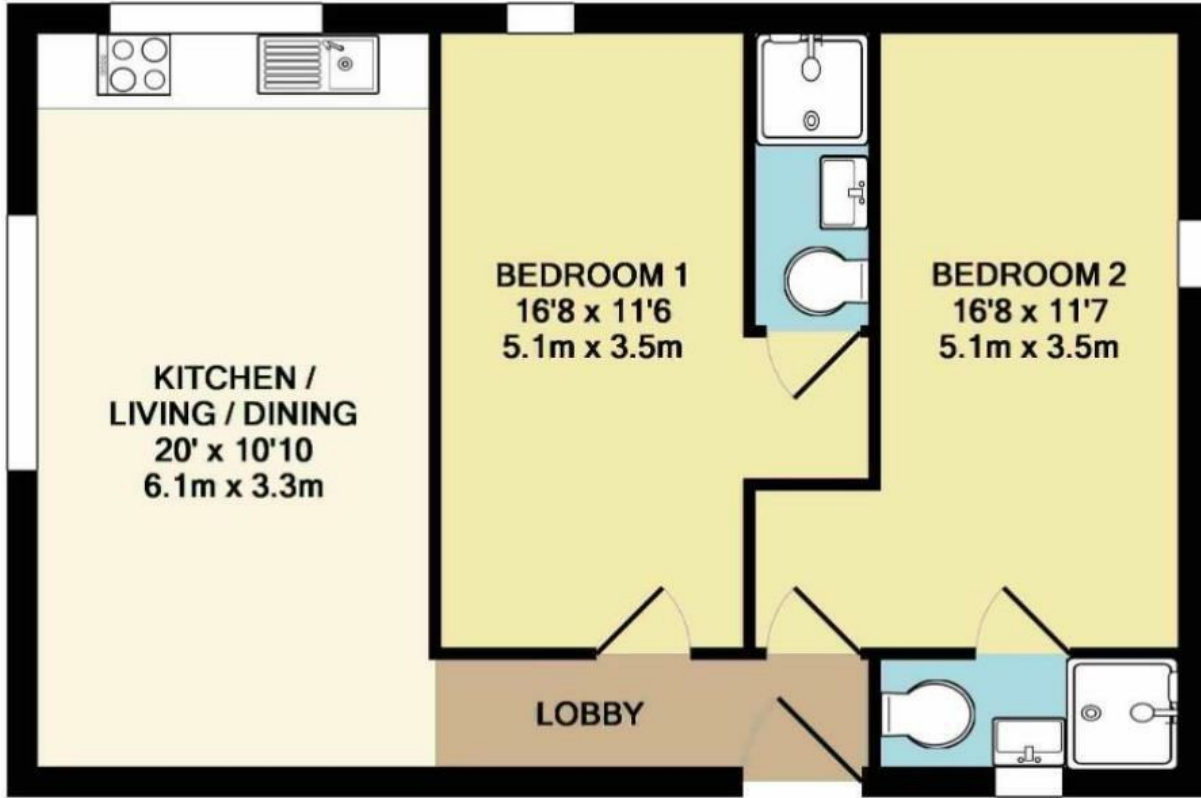
## Apartment 10 Lynton House, Sheffield S1 4AU £1,060 PCM

Modern Two-Bedroom Student Apartments – 2026/2027 Academic Year

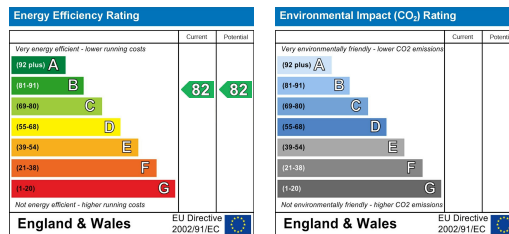
These contemporary two-bedroom student apartments are ideally located close to local amenities, universities, and hospitals, offering the perfect balance of convenience and comfort.

Each apartment features a spacious open-plan living area with a Karl Benz kitchen, integrated appliances, and a TV in the lounge, creating a stylish and functional space for socializing or studying. Both bedrooms come with en-suite showers, ensuring privacy and convenience.

The development is gated for added security, with optional parking spaces available on a first-come, first-served basis. Additional features include gas central heating and double glazing throughout, providing warmth and energy efficiency all year round.



TOTAL APPROX. FLOOR AREA 613 SQ.FT. (56.9 SQ.M.)  
Measurements are approximate. Not to scale. Illustrative purposes only  
Made with Metropix ©2018



Banner Cross  
Hathersage  
Bakewell  
Matlock  
www.saxtonmee.co.uk

949-951 Ecclesall Road, Sheffield S11 8TN  
3 Bank View, Main Road, Hathersage S32 1BB  
Matlock Street, Bakewell DE45 1EE  
27 Causeway Lane, Matlock, DE4 3AR

T: 0114 268 3241  
T: 01433 650009  
T: 01629 815307  
T: 01629 828250

E: bannercross@saxtonmee.co.uk  
E: hathersage@saxtonmee.co.uk  
E: bakewell@saxtonmee.co.uk  
E: matlock@saxtonmee.co.uk